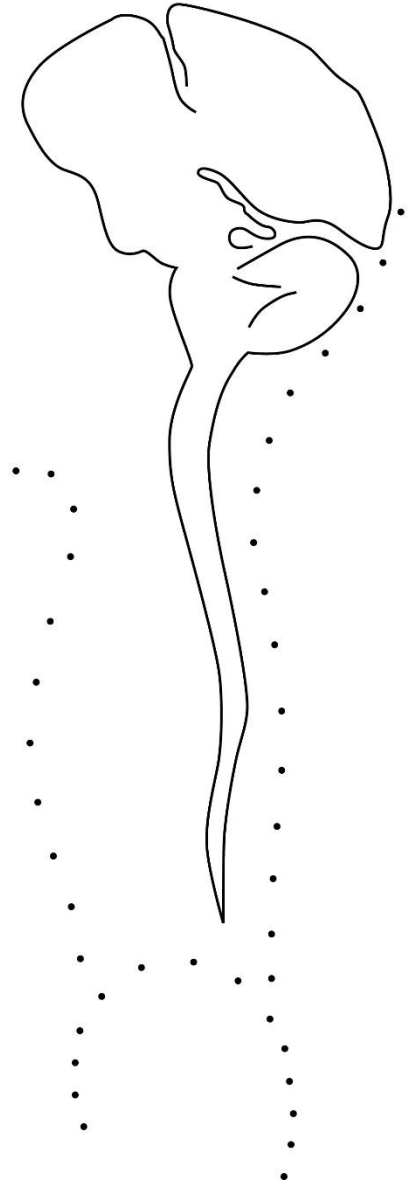
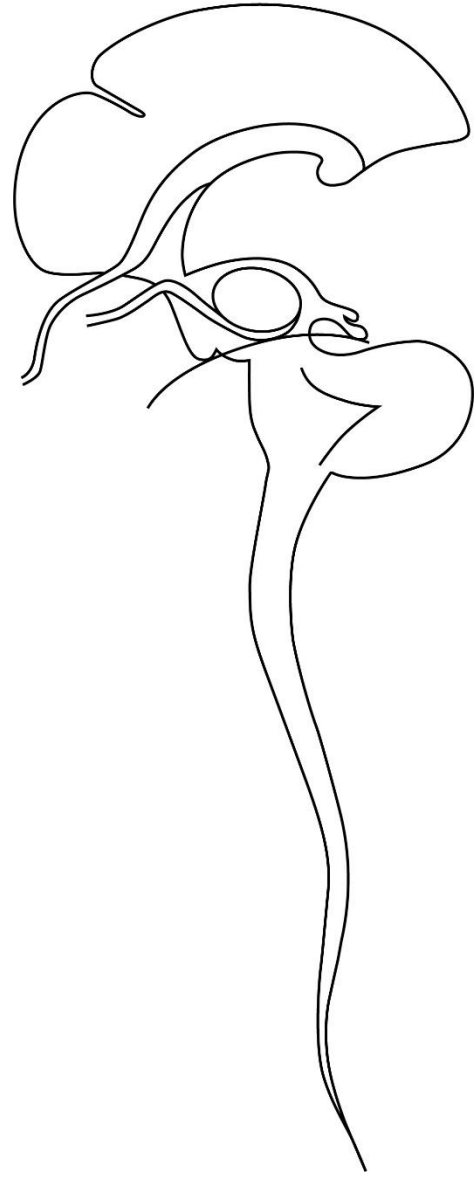


ILLUSTRATIONS, BOOK ONE, CHAPTER XXVIII section 01

1-28-01-Human Brain and Central Cerebrospinal Nervous System

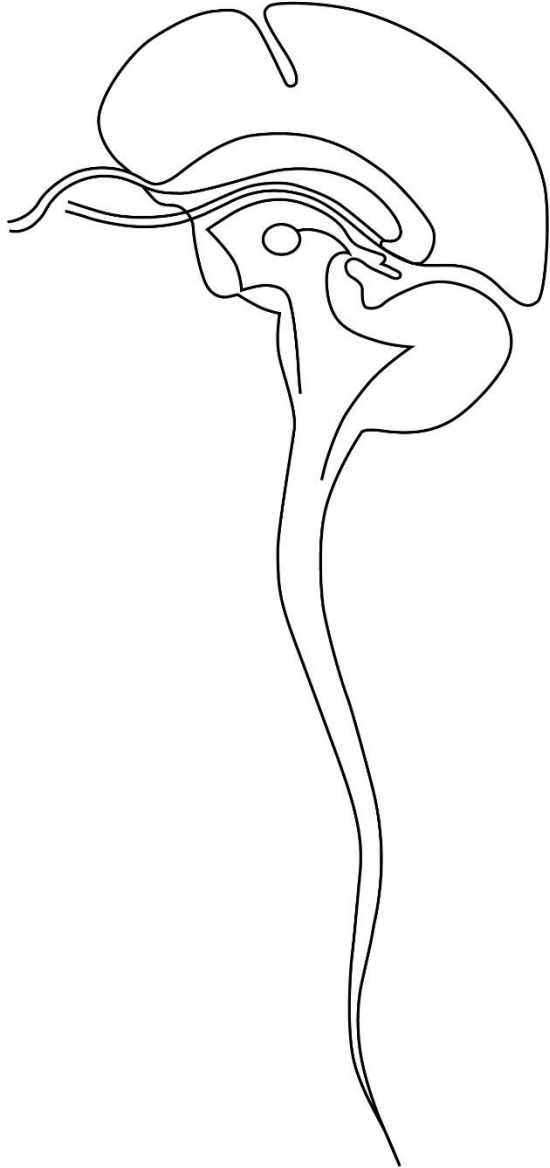


1-28-01-Illustration 6

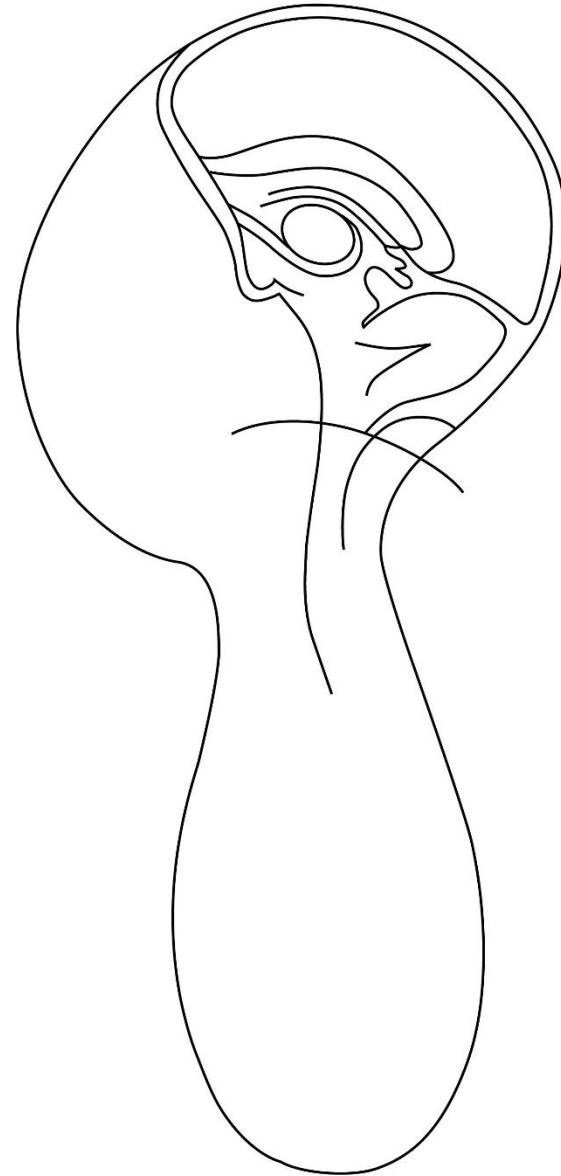


ILLUSTRATIONS, BOOK ONE, CHAPTER XXVIII section 01

1-28-01-Illustration x



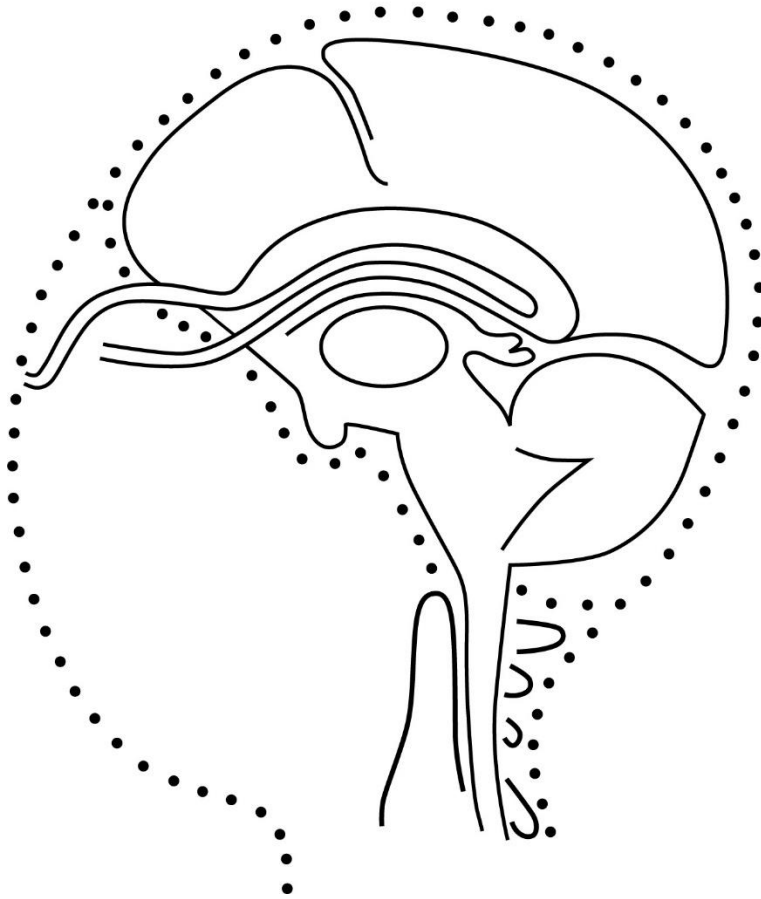
1-28-01-Illustration xx



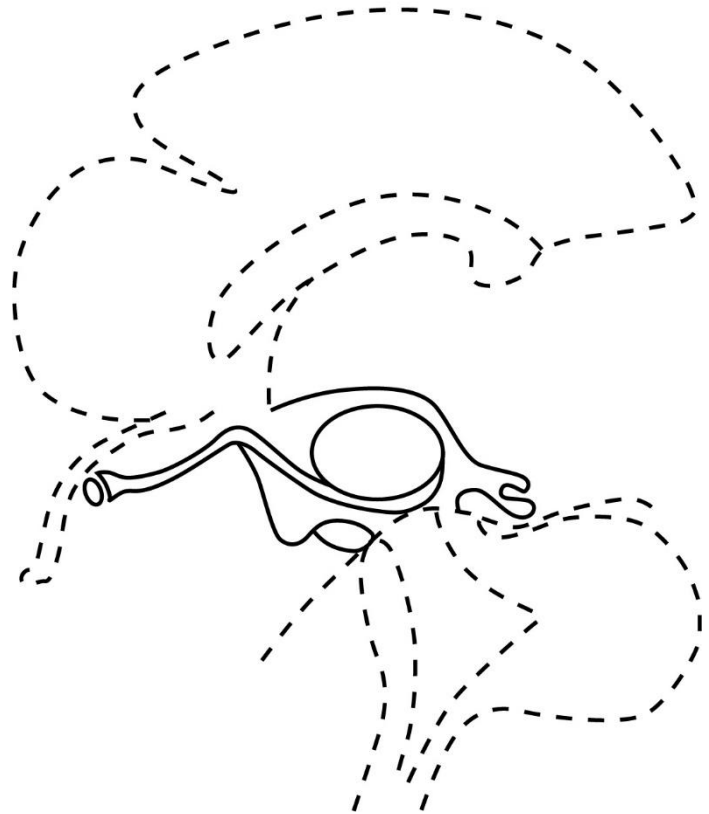
1-28-01

Section ii
The Encephalon Anatomy

1-28-01-The Cephalon



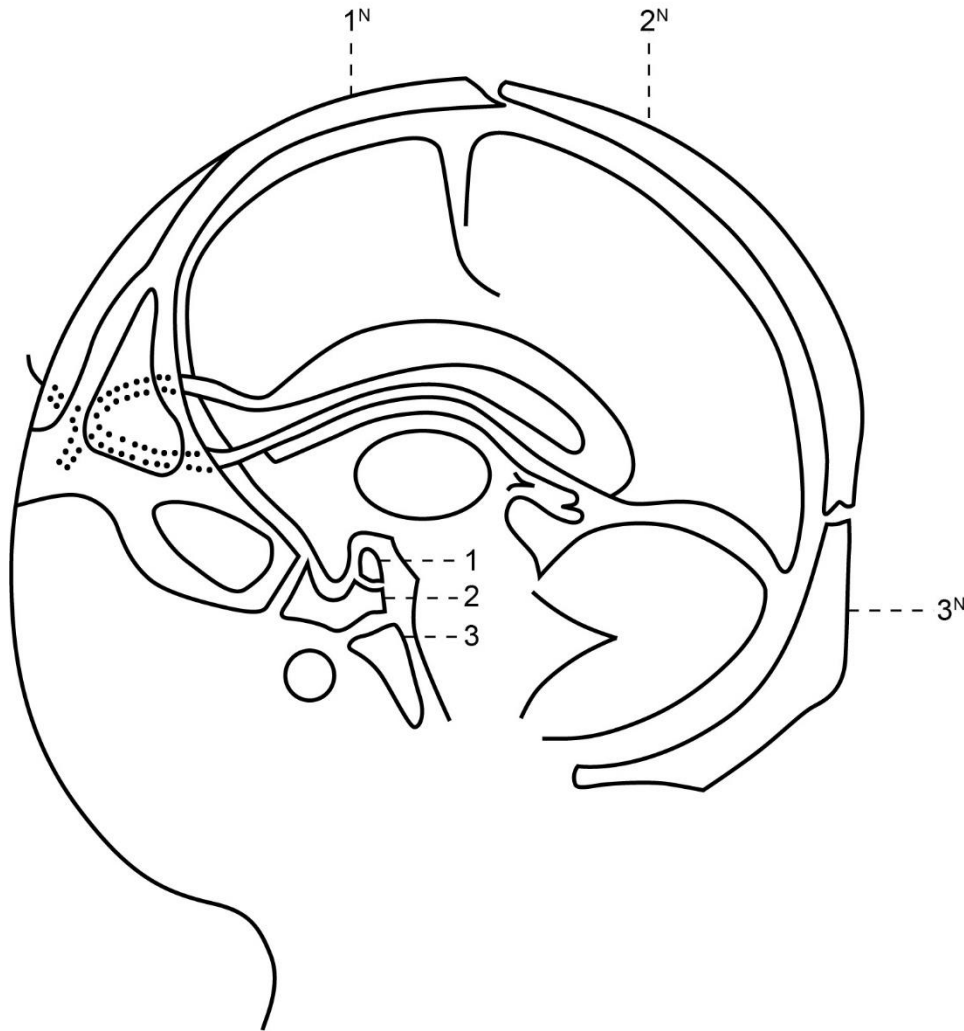
1-28-01-The Prosencephalon-illus 1



ILLUSTRATIONS, BOOK ONE, CHAPTER XXVIII section 01

1-28-01-The Prosencephalon-illus 2





1-28-01

The Prosencephalon

- i. Central region
- ii. End organs
- iii. Elongation
- iv. Physiology